



***New Voices,
New Works,
New Perspectives...***

**Join us for some of the best theatre
on and Off-Broadway
(at a 20% discount)**

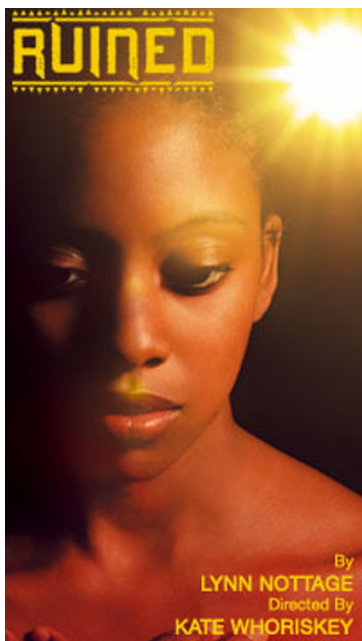
On Broadway at the Samuel J. Friedman Theatre: *Accent on Youth*

A new production of a comic gem
By Samson Raphaelson
Directed by Daniel Sullivan
Previews began April 7, 2009

David Hyde Pierce heads the cast in this salute to love's possibilities, both on stage and off. Successful playwright Steven Gaye (**Pierce**) is about to abandon his latest script, when his young secretary offers him new inspiration. With her as his muse, he stages the show on Broadway, only to learn, to his dismay, that the show's young leading man is being inspired by her too. In this fresh look at Samson Raphaelson's brilliantly clever comedy, the Tony Award-winning actor of *Curtains*, *Spamalot*, and television's "Frasier" returns to MTC under the direction of Tony Award winner Daniel Sullivan (MTC's *Proof* and *Rabbit Hole*). The cast also includes Lisa Banes, Rosie Benton, Curt Bouril, David Furr, Mary Catherine Garrison, Byron Jennings, Charles Kimbrough, and John Wernke.



NOW PLAYING at New York City Center, Stage I: *Ruined*



A world premiere co-production with the Goodman Theatre
By Lynn Nottage
Directed by Kate Whoriskey
**Winner! 2009 Pulitzer Prize and THE MOST ACCLAIMED
PLAY OF THE YEAR.**

**"This STRONG, VIVID, AND ABSORBING NEW PLAY is
never less than COMPELLING."**

Ben Brantley, The New York Times

From the Obie Award-winning author of such plays as *Fabulation* and *Intimate Apparel* comes this haunting, probing work about the resilience of the human spirit during times of war. Set in a small mining town in Democratic republic of Congo, this powerful play follows Mama Nadi, a shrewd businesswoman in a land torn apart by civil war. But is she protecting or profiting by the women she shelters? How far will she go to survive? Can a price be placed on a human life? Directing is Kate Whoriskey, who staged Ms. Nottage's *Fabulation* at Playwrights Horizons. The cast includes **Quincy Tyler Bernstine, Cherise Boothe, Chris Chalk, William Jackson Harper, Chike' Johnson, Russell Gebert Jones, Simon Shabantu Kashama, Kevin Mambo, Tom Mardirosian, Ron McBee, Portia, and Condola Rashad.**

SAVE 20% ON MTC TICKETS

MTC Corporate Partner employees are entitled to a 20% discount. To receive your 20% discount on subscriptions and single tickets, contact the following numbers and mention code CRP.

For Subscriptions: (212) 399-3030 or www.mtc-nyc.org

For Tickets at the Samuel J. Friedman Theatre call Telecharge: (212) 947-8844

For Tickets at New York City Center call CityTix: (212) 581-1212

For more information, please contact Roger Kingsepp at (212) 399-3000 x4285 or rkingsepp@mtc-nyc.org

The Ernst C. Stiefel 2009 7@7 Series

MTC's annual readings of new work began on March 30, and continues weekly through May 11. All readings are free and take place on Mondays at 7 PM at New York City Center, Stage I at 131 West 55th Street.

The Remaining Readings are:

April 20 *Recall* By Eliza Clark, Directed by Kip Fagan

April 27 *Close Up Space* By Molly Smith Metzler, Directed by Evan Cabnet

May 4 *The Color of Desire* Written and Directed by Nilo Cruz

May 11 *Funked Up Fairy Tales* Book, Music and Lyrics by Kirsten Childs, Directed by John Rando

Seating is limited. Reservations are required. Please call (212) 399-3000 x4163, or email us at readings@mtc-nyc.org.

Additional support provided by the Rockefeller Brothers Fund.

MANHATTAN THEATRE CLUB ANNOUNCES THREE PRODUCTIONS FOR THE 2009-2010 SEASON

Broadway Season to Include:

The Royal Family

By George S. Kaufman & Edna Ferber

Directed by Doug Hughes

Featuring John Glover, Rosemary Harris, Jan Maxwell, & Reg Rogers

Collected Stories

Broadway Premiere of the Acclaimed Play

By Donald Margulies

Directed by Lynne Meadow

Featuring Linda Lavin

Off-Broadway Season to Include:

Time Stands Still

New York Premiere of an Important New Work

By Donald Margulies

Directed by Daniel Sullivan

MORE ANNOUNCEMENTS TO FOLLOW...